

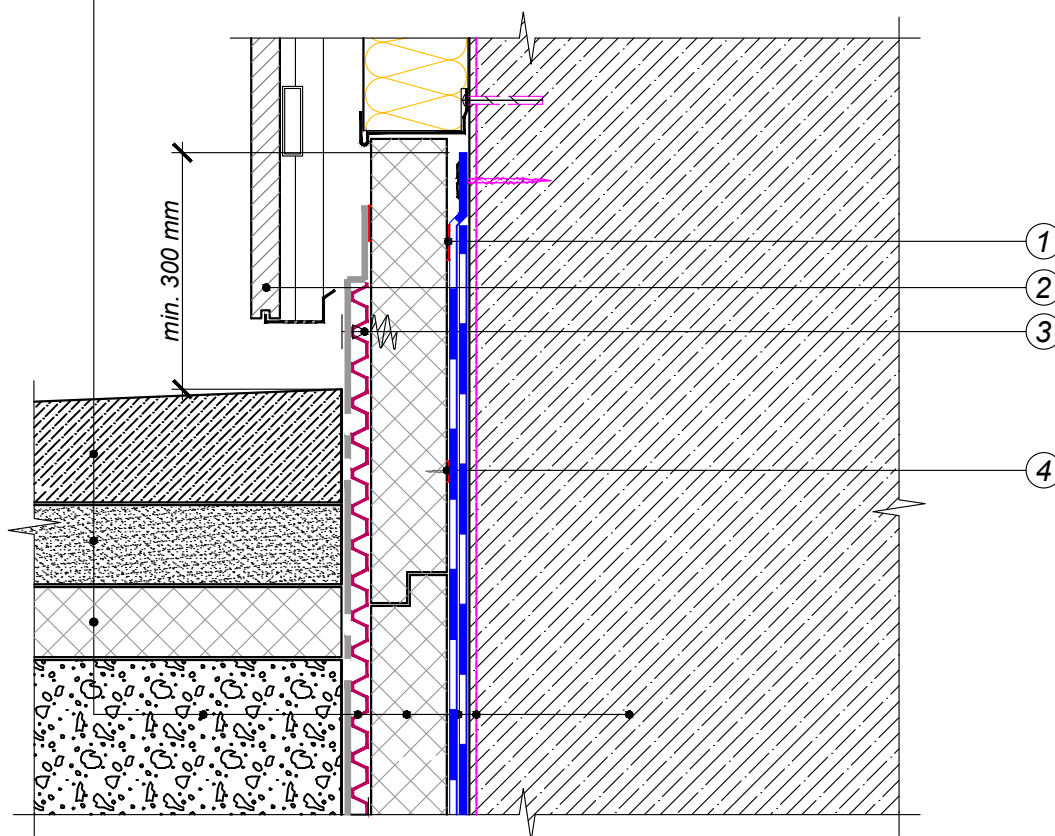
- 1 - Plinth wall construction
- 2 - Structure of insulation solutions. Vertical part.
- 3 - Construction of pipe penetrations.
- 4 - Structure of insulation solutions. Horizontal part.
- 5 - Conjugation of vertical and horizontal part of foundation.
- 6 - Horizontal expansion joint.
- 7 - Junction to pile head.

Not shown in the diagram:
 Vertical expansion joint.
 Internal angle.
 External angle.

				FOUNDATION WITH DRAINAGE	DESIGN	APPROVED
				UNITS MARKING DIAGRAM	SCALE	DATE
REV.	DATE	DESCRIPTION	CHECKED		DWG No.	REV.



- Blind area structure
- Compacted leveling sand cushion
- Extruded polystyrene CARBON PROF 300
- Backfill soil
- Profiled drainage membrane with geotextile
- Extruded polystyrene CARBON PROF 300
- Underlay waterproofing bitumen membrane - 2 layers
- Bitumen primer TechnoNICOL No. 01
- Foundation wall

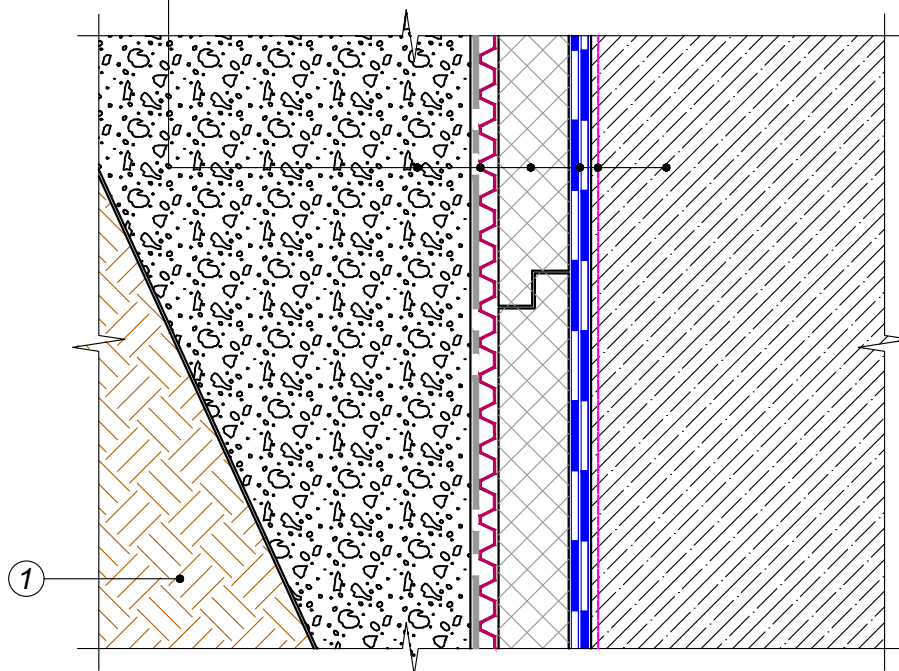


- ① Adhesive mastic
- ② Facade structure
- ③ Special screw with wide thread for fastening to polystyrene (screw length to be maximum thickness of thermal insulation minus 15mm)
- ④ Fasteners

				FOUNDATION WITH DRAINAGE	DESIGN	APPROVED
					SCALE	DATE
REV.	DATE	DESCRIPTION	CHECKED	PLINTH WALL CONSTRUCTION	DWG No.	REV.



Backfill soil
Profiled drainage membrane with geotextile
Extruded polystyrene CARBON PROF 300
Underlay waterproofing bitumen membrane - 2 layers
Bitumen primer TechnoNICOL No. 01
Foundation wall

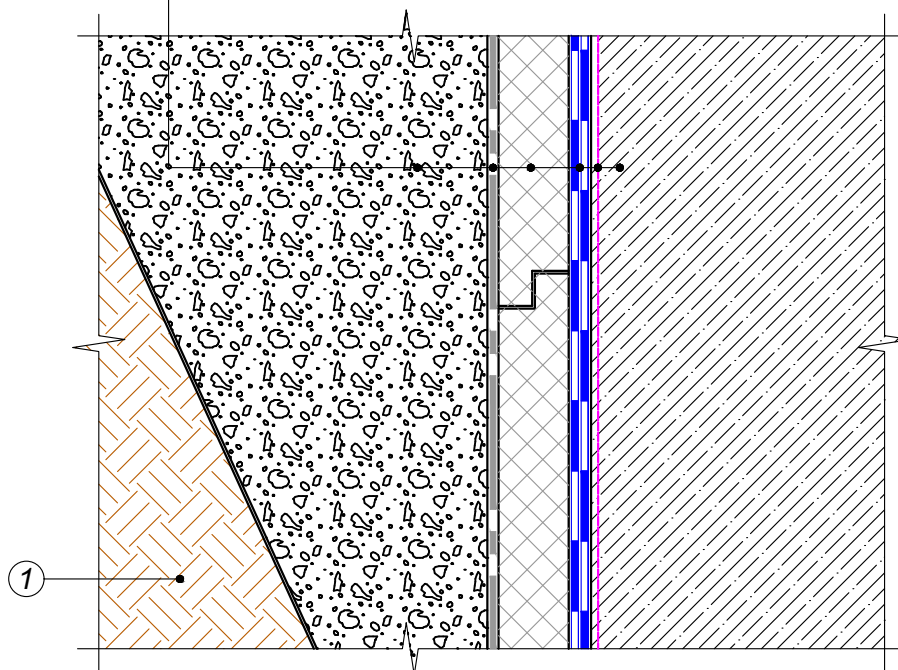


① Soil

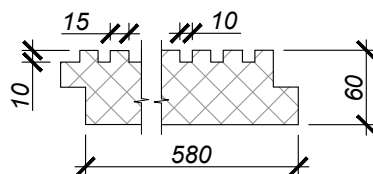
				FOUNDATION WITH DRAINAGE	DESIGN	APPROVED
					SCALE	DATE
REV.	DATE	DESCRIPTION	CHECKED	STRUCTURE OF INSULATION SOLUTIONS. VERTICAL PART	DWG No.	REV.



- Backfill soil
- Geotextile
- Extruded polystyrene CARBON ECO D
- Underlay waterproofing bitumen membrane - 2 layers
- Bitumen primer TechnoNICOL No. 01
- Foundation wall



Cross-section of slab XPS TechnoNICOL CARBON ECO D (Drainage)



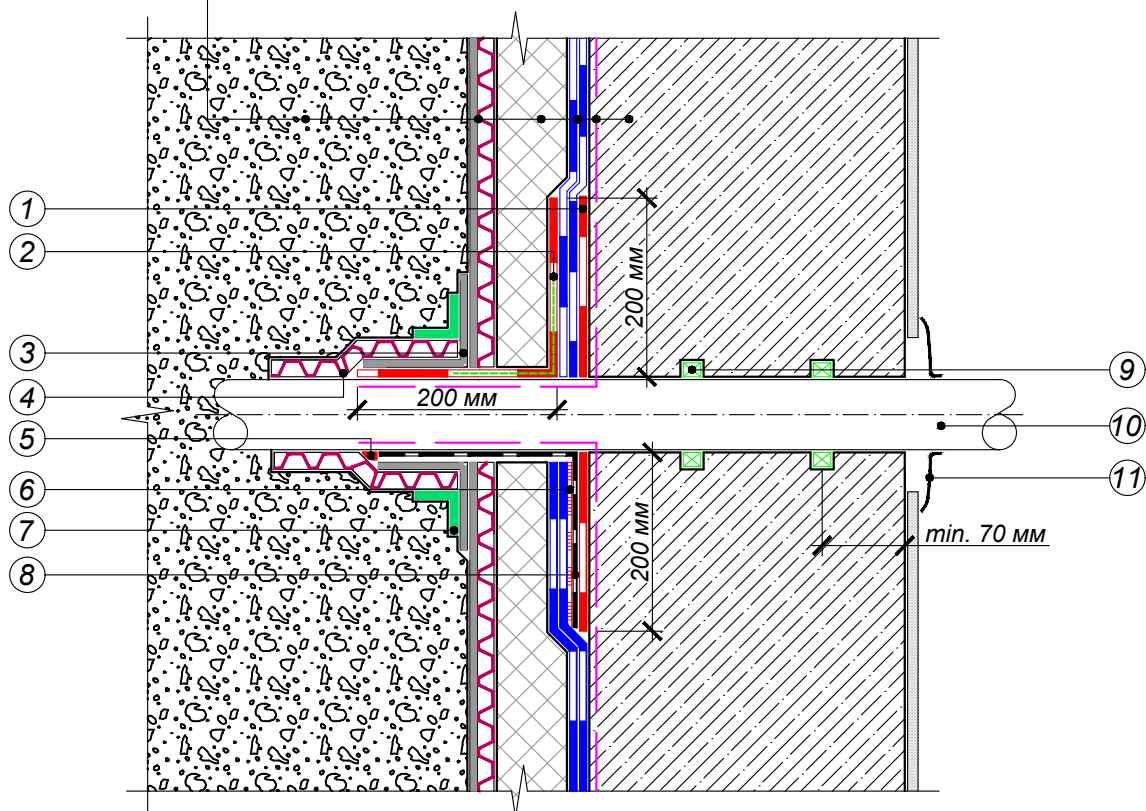
① Soil

				FOUNDATION WITH DRAINAGE	DESIGN	APPROVED
				STRUCTURE OF INSULATION SOLUTIONS USING XPS TECHNONICOL CARBON ECO. VERTICAL PART	SCALE	DATE
REV.	DATE	DESCRIPTION	CHECKED		DWG No.	REV.



Variant with mastic

- Backfill soil
- Profiled drainage membrane with geotextile
- Extruded polystyrene CARBON PROF 300
- Underlay waterproofing bitumen membrane - 2 layers
- Bitumen primer TechnoNICOL No. 01
- Foundation wall



Variant with flexible sealing element

- | | |
|--|---------------------------------------|
| ① Strengthening layer - Underlay bitumen membrane | ⑥ Treat with mastic |
| ② Fiber-glass fabric reinforced mastic TechnoNICOL | ⑦ NICOBAND self-adhesive sealant tape |
| ③ Geotextile ** | ⑧ Flexible sealing element* |
| ④ Strip of drainage membrane around pipe* | ⑨ Swelling cord |
| ⑤ Polyurethane sealant TechnoNICOL | ⑩ Pipe |
| | ⑪ Internal coupling |

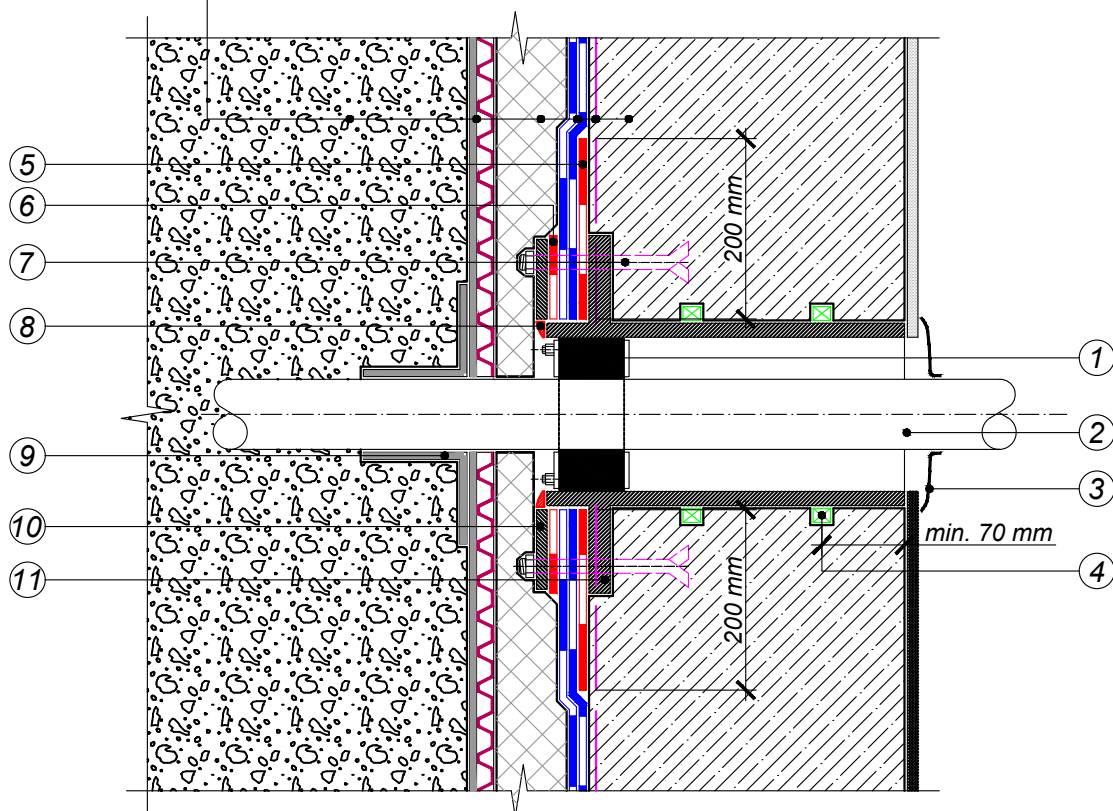
*-additionally fixed with clamps

**-with dimensions 100*100 mm

				FOUNDATION WITH DRAINAGE	DESIGN	APPROVED
				CONSTRUCTION OF PIPE PENETRATIONS	SCALE	DATE
REV.	DATE	DESCRIPTION	CHECKED		DWG No.	REV.



Backfill soil
Profiled drainage membrane with geotextile
Extruded polystyrene CARBON PROF 300
Underlay waterproofing bitumen membrane - 2 layers
Bitumen primer TechnoNICOL No. 01
Foundation wall



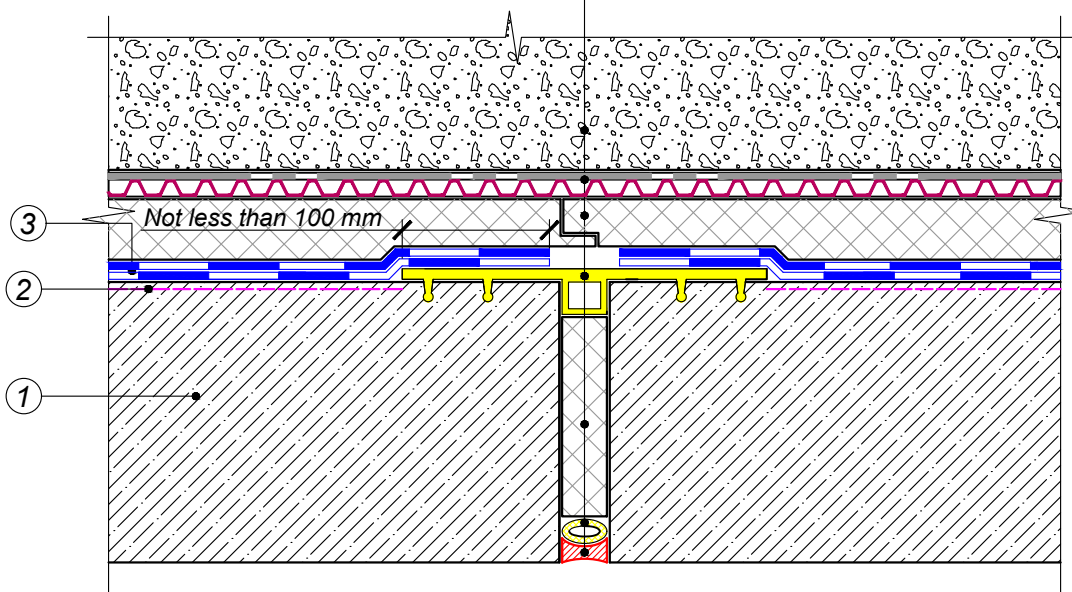
- | | |
|---|--|
| ① Internal sealing element | ⑥ Pressure pad - Underlay bitumen membrane |
| ② Pipe | ⑦ Anchor bolt |
| ③ Internal coupling | ⑧ Polyurethane sealant |
| ④ Swelling cord | ⑨ Geotextile * |
| ⑤ Strengthening layer - Underlay bitumen membrane | ⑩ Metal clamp element |
| | ⑪ Metal sleeve |

*-with dimensions 100*100 mm

				FOUNDATION WITH DRAINAGE	DESIGN	APPROVED
				CONSTRUCTION OF PIPE PENETRATIONS WITH SPECIAL PREFABRICATED ELEMENTS	SCALE	DATE
REV.	DATE	DESCRIPTION	CHECKED		DWG No.	REV.



- Backfill soil
- Profiled drainage membrane with geotextile
- Extruded polystyrene CARBON PROF 300
- Side bitumen-compatible waterstop
- Extruded polystyrene CARBON PROF 300
- Sealing cord of polyethylene foam
- Polyurethane sealant

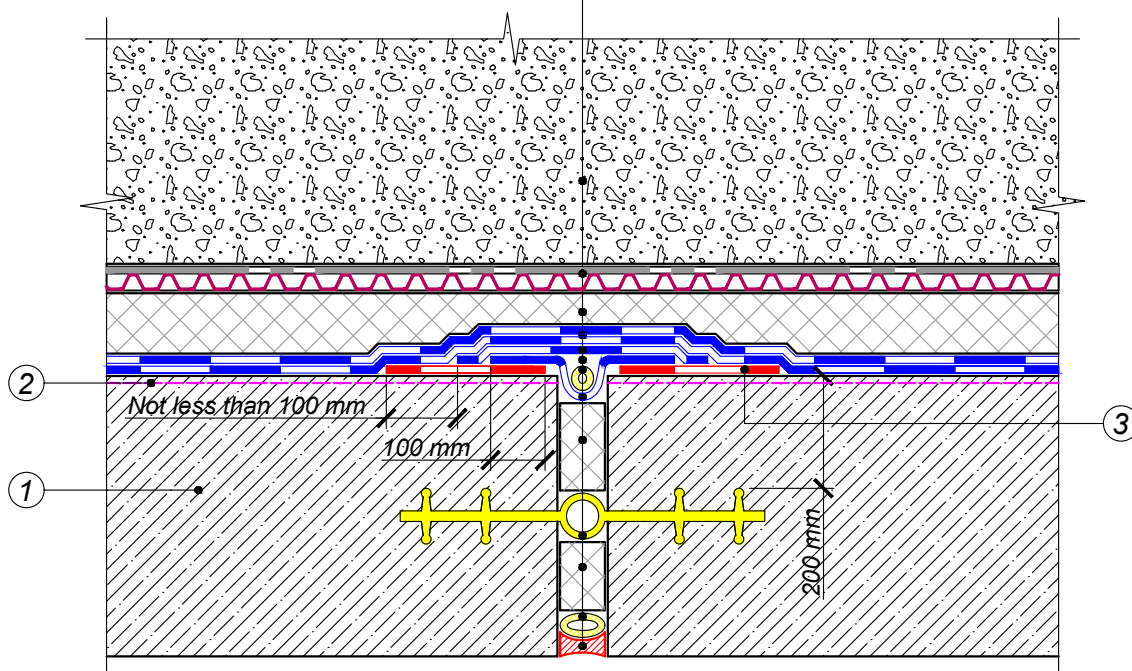


- ① Vertical enclosure foundation structure
- ② Bitumen primer TechnoNICOL No. 01
- ③ Underlay waterproofing bitumen membrane - 2 layers

				FOUNDATION WITH DRAINAGE	DESIGN	APPROVED
				VERTICAL EXPANSION JOINT WITH SIDE WATERSTOP	SCALE	DATE
REV.	DATE	DESCRIPTION	CHECKED		DWG No.	REV.



- Backfill soil
- Profiled drainage membrane with geotextile
- Extruded polystyrene CARBON PROF 300
- Underlay waterproofing bitumen membrane - 2 layers
- Bitumen carrier less waterproofing membrane
- Sealing cord of porous rubber
- Bitumen carrier less waterproofing membrane
- Extruded polystyrene CARBON PROF
- Central PVC waterstop
- Extruded polystyrene CARBON PROF 300
- Sealing cord of polyethylene foam
- Polyurethane sealant

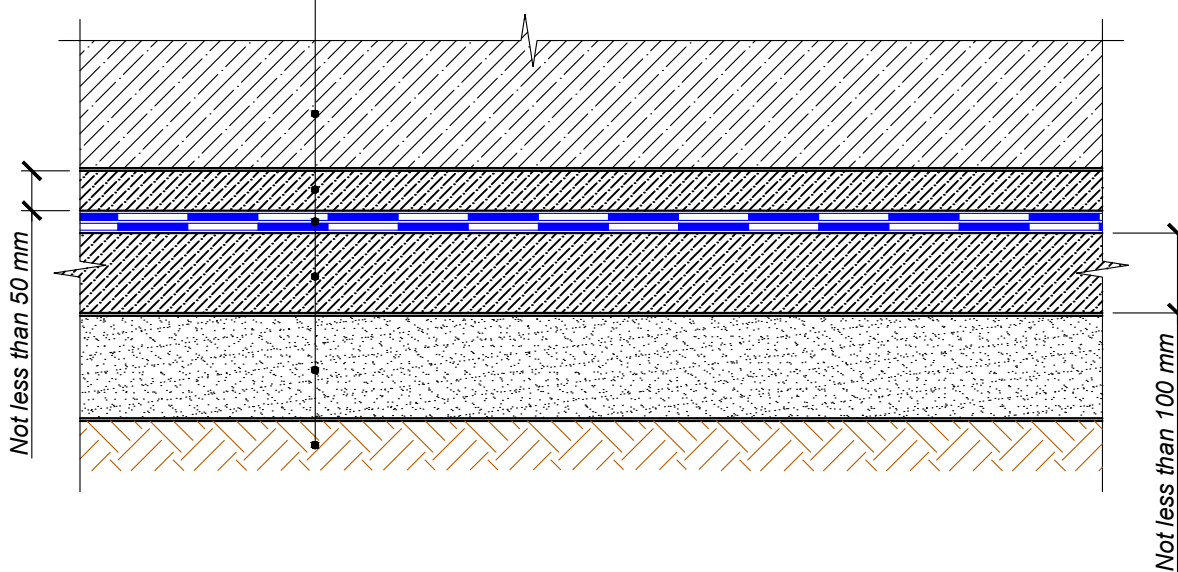


- ① Vertical enclosure foundation structure
- ② Bitumen primer TechnoNICOL No. 01
- ③ Strengthening layer - Underlay bitumen membrane

				FOUNDATION WITH DRAINAGE	DESIGN	APPROVED
				VERTICAL EXPANSION JOINT WITH CENTRAL WATERSTOP	SCALE	DATE
REV.	DATE	DESCRIPTION	CHECKED		DWG No.	REV.



- Foundation slab
- Protective sand-cement screed
- Underlay waterproofing bitumen membrane - 2 layers*
- Concrete blinding
- Compacted leveling sand cushion
- Compacted soil foundation

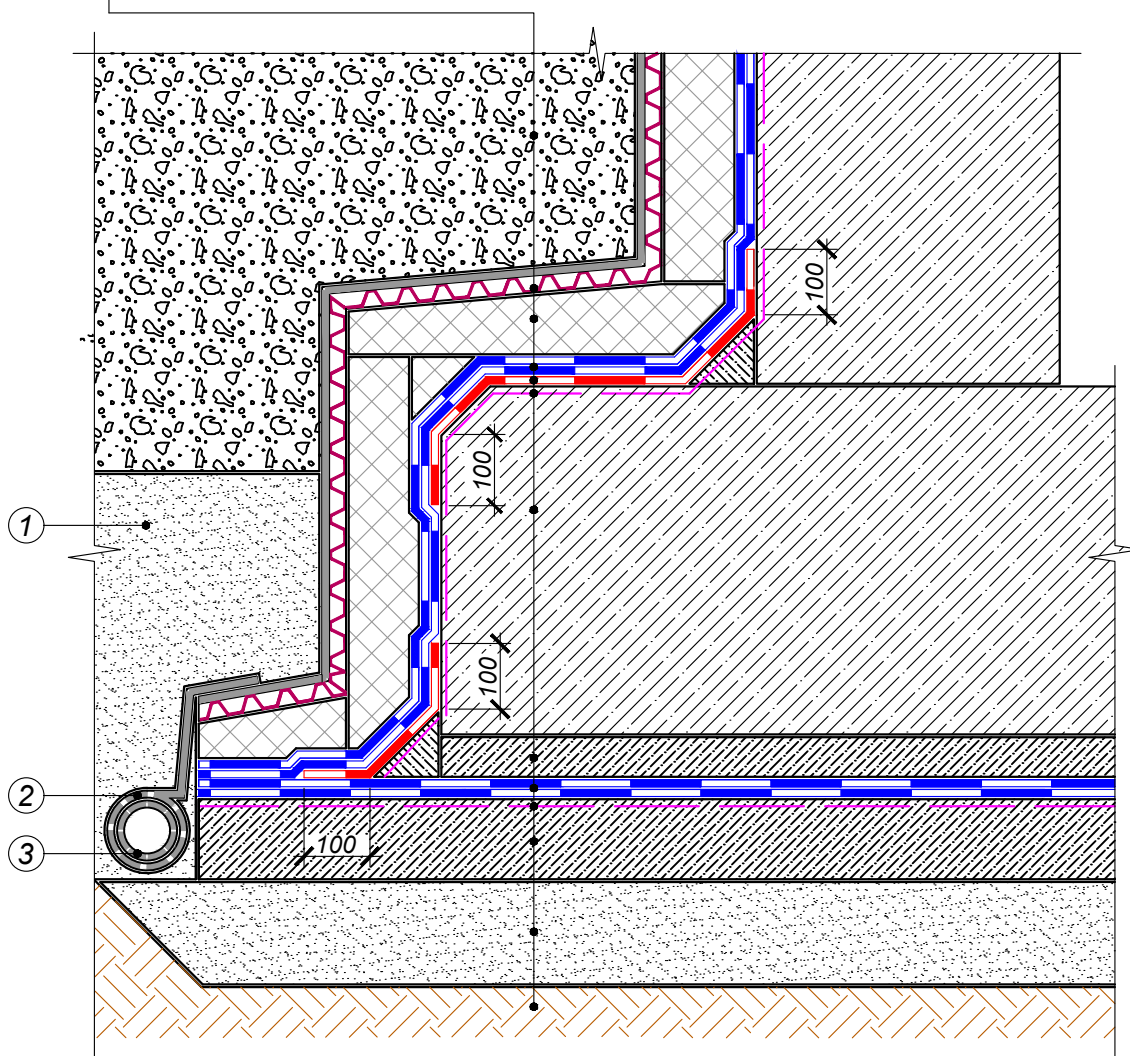


**-first layer shall be laid freely and welded in overlaps, or built up on primer.*

				FOUNDATION WITH DRAINAGE	DESIGN	APPROVED
				STRUCTURE OF INSULATION SOLUTIONS. HORIZONTAL PART	SCALE	DATE
REV.	DATE	DESCRIPTION	CHECKED		DWG No.	REV.



- Backfill soil
- Profiled drainage membrane with geotextile
- Extruded polystyrene CARBON PROF 300
- Underlay waterproofing bitumen membrane - 2 layers
- Strengthening layer - Underlay bitumen membrane
- Bitumen primer TechnoNICOL No. 01
- Foundation slab
- Protecting sand-cement screed not less than 50 mm
- Underlay waterproofing bitumen membrane - 2 layers
- Bitumen primer TechnoNICOL No. 01
- Concrete blinding
- Compacted leveling sand cushion
- Compacted soil foundation

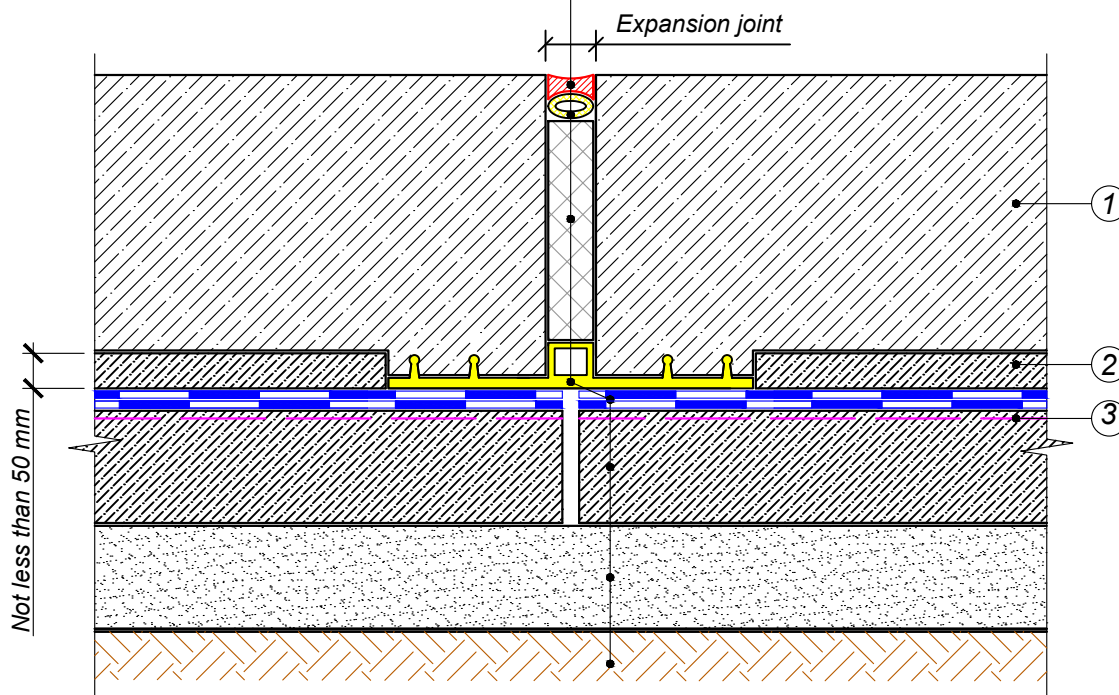


- ① One-layer drainage filling
- ② Geotextile
- ③ Drainage pipe

				FOUNDATION WITH DRAINAGE	DESIGN	APPROVED
				CONJUGATION OF VERTICAL AND HORIZONTAL PART OF FOUNDATION	SCALE	DATE
REV.	DATE	DESCRIPTION	CHECKED		DWG No.	REV.



- Polyurethane sealant
- Sealing cord of polyethylene foam
- Extruded polystyrene CARBON PROF 300
- Side bitumen-compatible waterstop
- Underlay waterproofing bitumen membrane - 2 layers
- Concrete blinding
- Compacted leveling sand cushion
- Compacted soil foundation

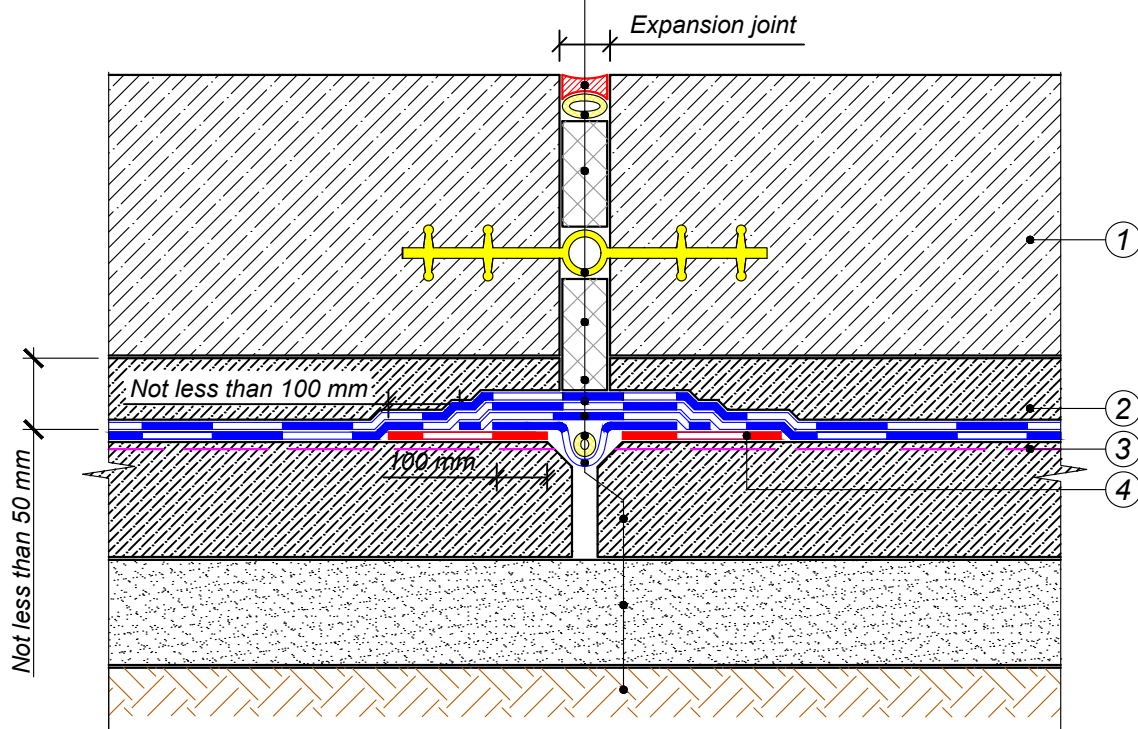


- ① Foundation slab
- ② Protective sand-cement screed
- ③ Bitumen primer TechnoNICOL No. 01

				FOUNDATION WITH DRAINAGE	DESIGN	APPROVED
				HORIZONTAL EXPANSION JOINT WITH SIDE WATERSTOP	SCALE	DATE
REV.	DATE	DESCRIPTION	CHECKED		DWG No.	REV.



- Polyurethane sealant
- Sealing cord of polyethylene foam
- Extruded polystyrene CARBON PROF 300
- Internal PVC waterstop
- Extruded polystyrene CARBON PROF 300
- Underlay waterproofing bitumen membrane - 2 layers
- Bitumen carrier less waterproofing membrane
- Sealing cord of porous rubber
- Bitumen carrier less waterproofing membrane
- Concrete blinding
- Compacted leveling sand cushion
- Compacted soil foundation

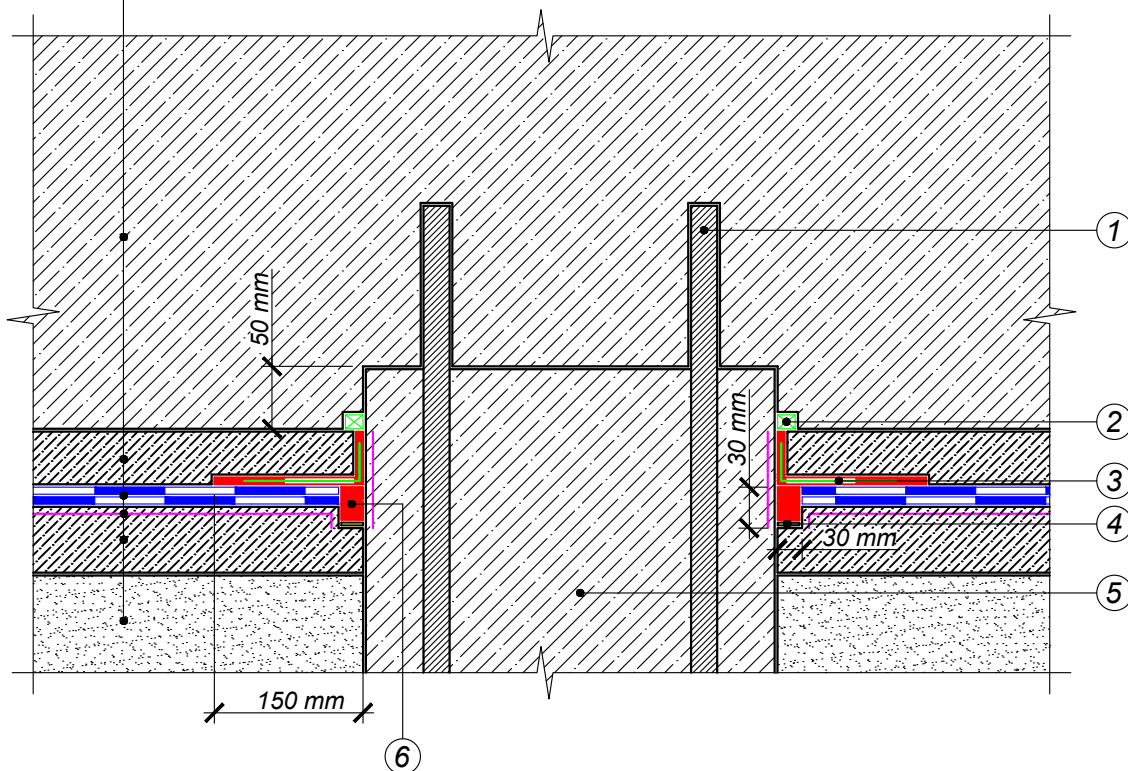


- ① Foundation slab
- ② Protective sand-cement screed
- ③ Bitumen primer TechnoNICOL No. 01
- ④ Strengthening layer Underlay bitumen membrane

				FOUNDATION WITH DRAINAGE	DESIGN	APPROVED
					SCALE	DATE
REV.	DATE	DESCRIPTION	CHECKED	HORIZONTAL EXPANSION JOINT WITH CENTRAL WATERSTOP	DWG No.	REV.



- Foundation slab
- Protective sand-cement screed
- Underlay waterproofing bitumen membrane - 2 layers
- Bitumen primer TechnoNICOL No. 01
- Concrete blinding
- Compacted leveling sand cushion



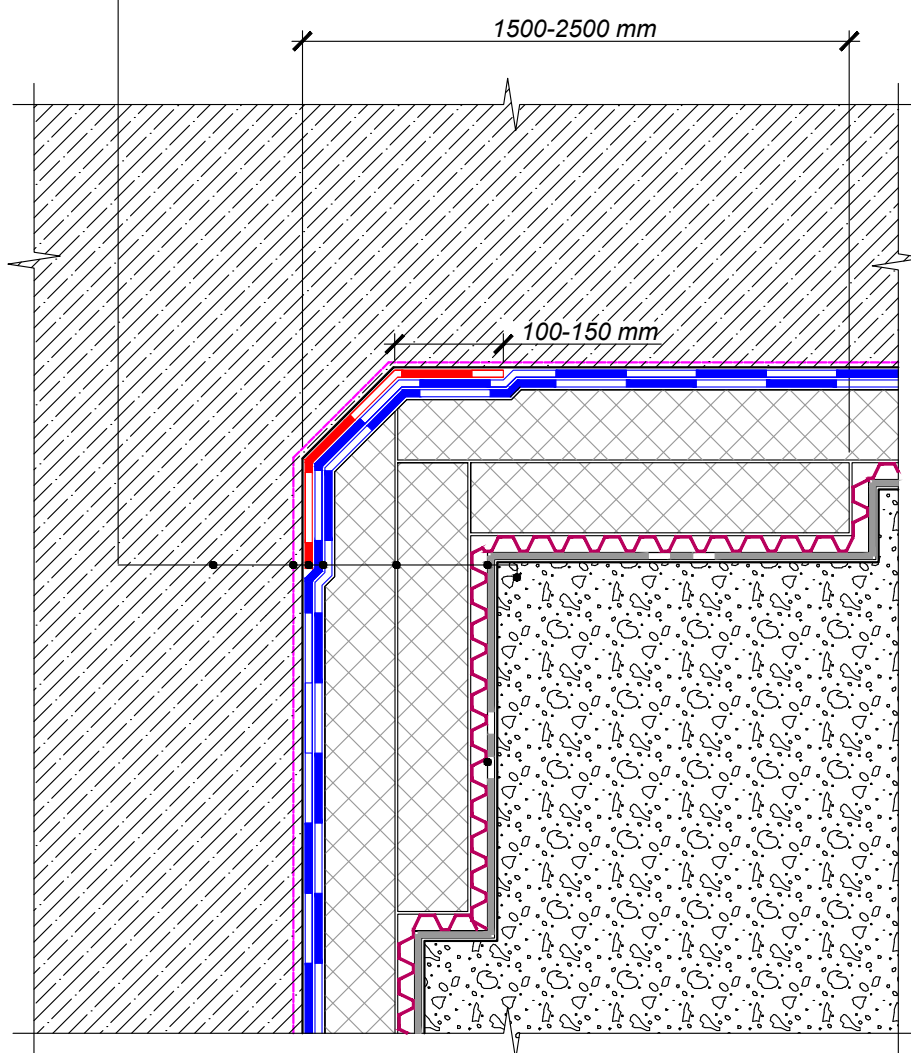
- ① Protruding bars
- ② Swelling cord
- ③ Fiber-glass mesh reinforced mastic TechnoNICOL No. 21
- ④ Anti-adhesion pad (e.g. asphalt felt strip)
- ⑤ Pile
- ⑥ Polymer-bitumen sealant

* - before applying mastic it is necessary to melt protective film on Underlay bitumen membrane.

				FOUNDATION WITH DRAINAGE	DESIGN	APPROVED
					SCALE	DATE
REV.	DATE	DESCRIPTION	CHECKED	JUNCTION TO PILE HEAD	DWG No.	REV.



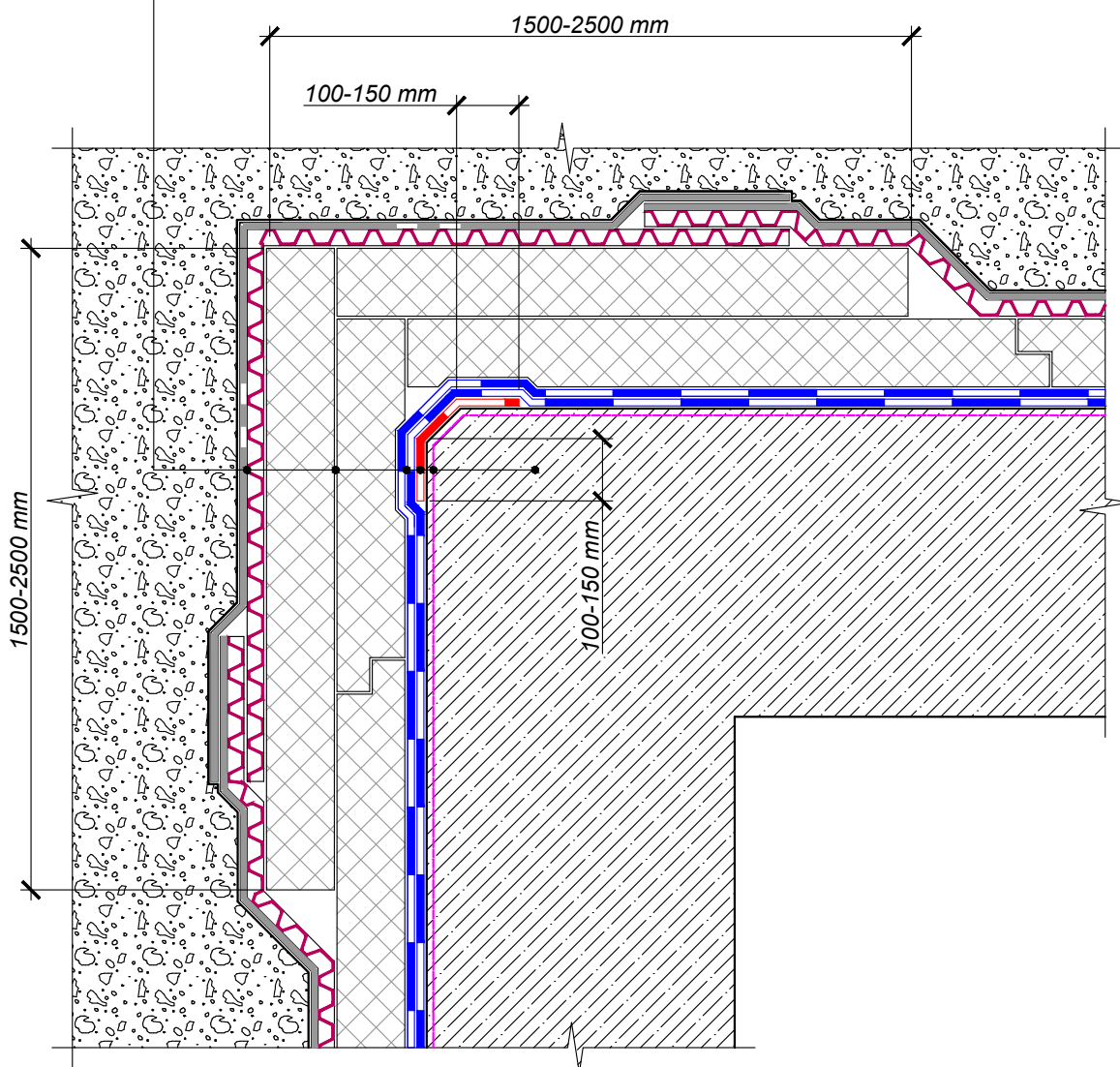
- Foundation wall
- Bitumen primer TechnoNICOL No. 01
- Strengthening layer - Underlay bitumen membrane
- Underlay waterproofing bitumen membrane - 2 layers
- Extruded polystyrene CARBON PROF 300 - 2 layers
- Profiled drainage membrane with geotextile
- Backfill soil



				FOUNDATION WITH DRAINAGE	DESIGN	APPROVED
				INTERNAL ANGLE	SCALE	DATE
REV.	DATE	DESCRIPTION	CHECKED		DWG No.	REV.



- Backfill soil
- Profiled drainage membrane with geotextile
- Extruded polystyrene CARBON PROF 300 - 2 layers
- Underlay waterproofing bitumen membrane - 2 layers
- Strengthening layer - Underlay bitumen membrane
- Bitumen primer TechnoNICOL No. 01
- Foundation wall



				FOUNDATION WITH DRAINAGE	DESIGN	APPROVED
					SCALE	DATE
REV.	DATE	DESCRIPTION	CHECKED	EXTERNAL ANGLE	DWG No.	REV.