

System solution for indoor
waterproofing of wet areas with
ULTRAFLEX SA NBS



Finished flooring - tiles

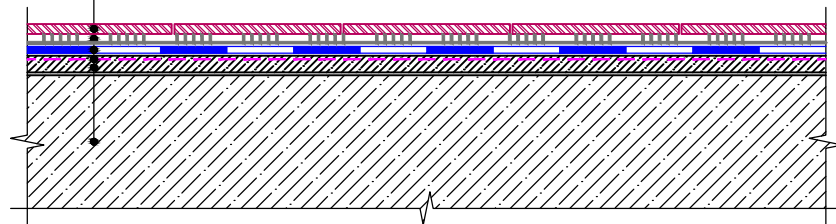
Water resistant tile adhesive

Waterproofing polymer-bitumen membrane ULTRAFLEX SA NBS

UNIVERSAL WATER BASED PRIMER by TECHNIPOL

Leveling sand cement screed

Reinforced concrete base

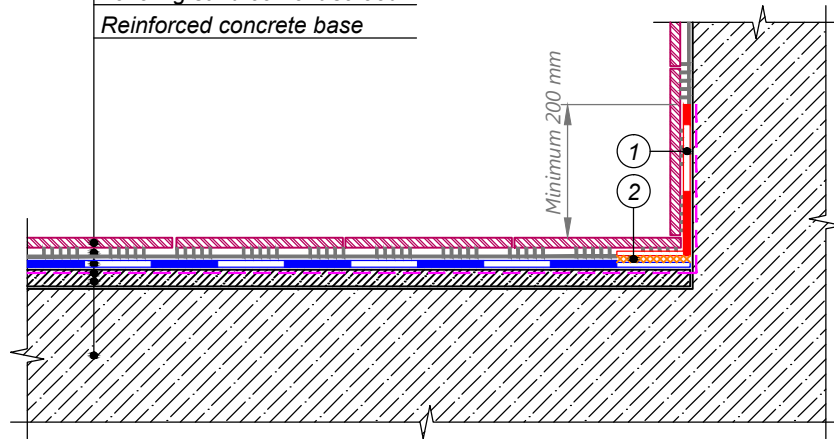


					DESIGN	APPROVED
				STRUCTURE OF WATERPROOFING SOLUTION	SCALE	DATE
REV.	DATE	DESCRIPTION	CHECKED		DWG No.	REV.

System solution for indoor
waterproofing of wet areas with
ULTRAFLEX SA NBS



Finished flooring - tiles
Water resistant tile adhesive
Waterproofing polymer-bitumen membrane ULTRAFLEX SA NBS
UNIVERSAL WATER BASED PRIMER by TECHNIPOL
Leveling sand cement screed
Reinforced concrete base



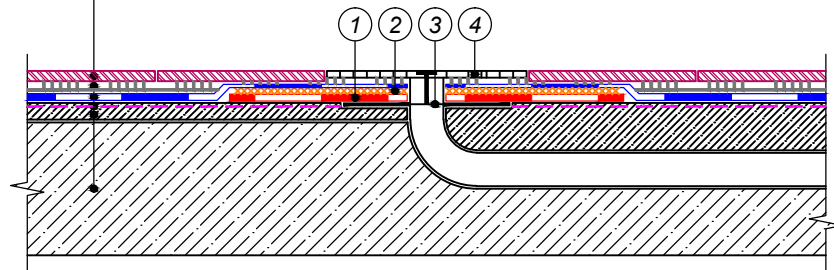
- ① Waterproofing polymer-bitumen membrane ULTRAFLEX SA NBS should be overlapped onto the vertical surface to the minimum height of 200 mm above the floor level.
- ② Adhesive bitumen mastic

					DESIGN	APPROVED
					SCALE	DATE
REV.	DATE	DESCRIPTION	CHECKED	JUNCTION TO THE VERTICAL SURFACE		DWG No. REV.

System solution for indoor
waterproofing of wet areas with
ULTRAFLEX SA NBS



Finished flooring - tiles
Water resistant tile adhesive
Waterproofing polymer-bitumen membrane ULTRAFLEX SA NBS
UNIVERSAL WATER BASED PRIMER by TECHNOCOL
Leveling sand cement screed
Reinforced concrete base



- ① Reinforcement layer of ULTRAFLEX SA NBS
- ② Adhesive bitumen mastic
- ③ Water drain trap
- ④ Decorative strainer

					DESIGN	APPROVED
					SCALE	DATE
REV.	DATE	DESCRIPTION	CHECKED	JUNCTION TO THE WATER DRAIN TRAP		REV.
				DWG No.		