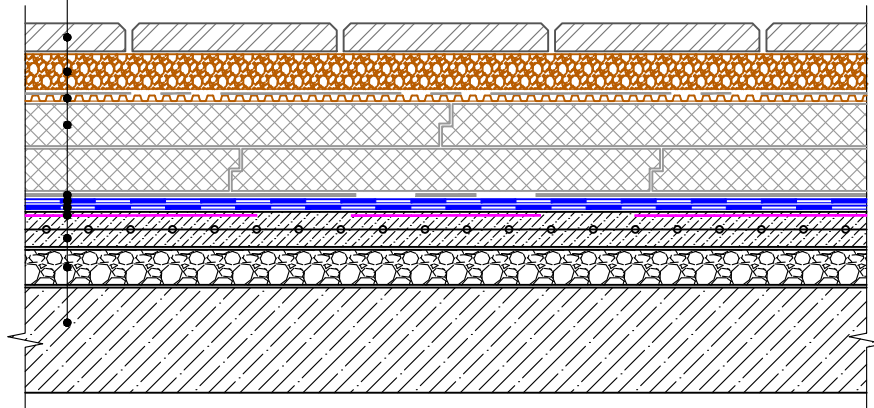




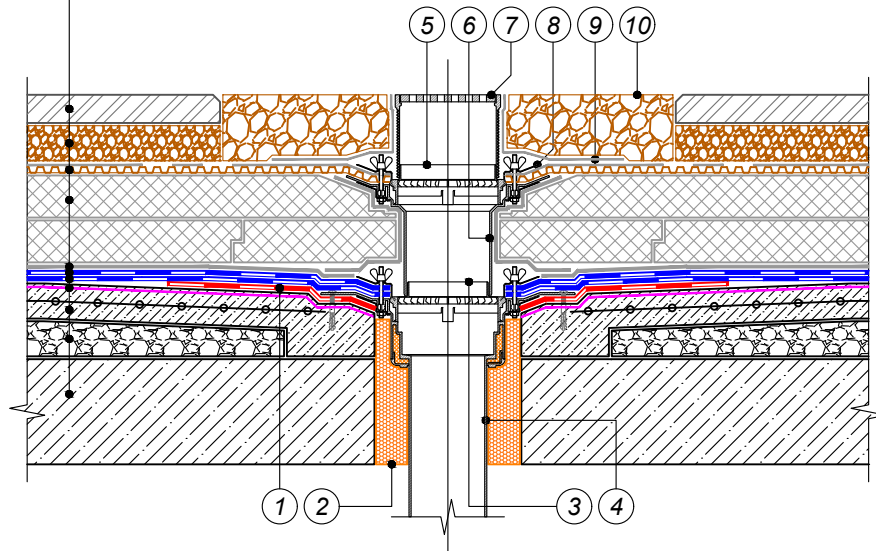
- Protective-decorative coating
- Washed gravel, fraction 2-5 mm
- Drainage membrane with geotextile
- Extruded polystyrene
- TECHNONICOL CARBON PROF 300
- Heat-treated needle-punched geotextile 300 g/sq.m
- Underlay waterproofing bitumen membrane
- Underlay waterproofing bitumen membrane
- Bitumen primer
- TECHNONICOL No. 01
- Reinforced sand-cement screed
- Sloping of expanded clay gravel
- Reinforced concrete foundation



				TERRACE WITH DRAINAGE	DESIGN	APPROVED
				STRUCTURE OF ROOFING SOLUTIONS	SCALE	DATE
REV.	DATE	DESCRIPTION	CHECKED		DWG No.	REV.



Protective-decorative coating
Washed gravel, fraction 2-5 mm
Drainage membrane with geotextile
Extruded polystyrene
TECHNONICOL CARBON PROF 300
Heat-treated needle-punched geotextile 300 g/sq.m
Underlay waterproofing bitumen membrane
Underlay waterproofing bitumen membrane
Bitumen primer
TECHNONICOL No. 01
Reinforced sand-cement screed
Sloping of expanded clay gravel
Reinforced concrete foundation

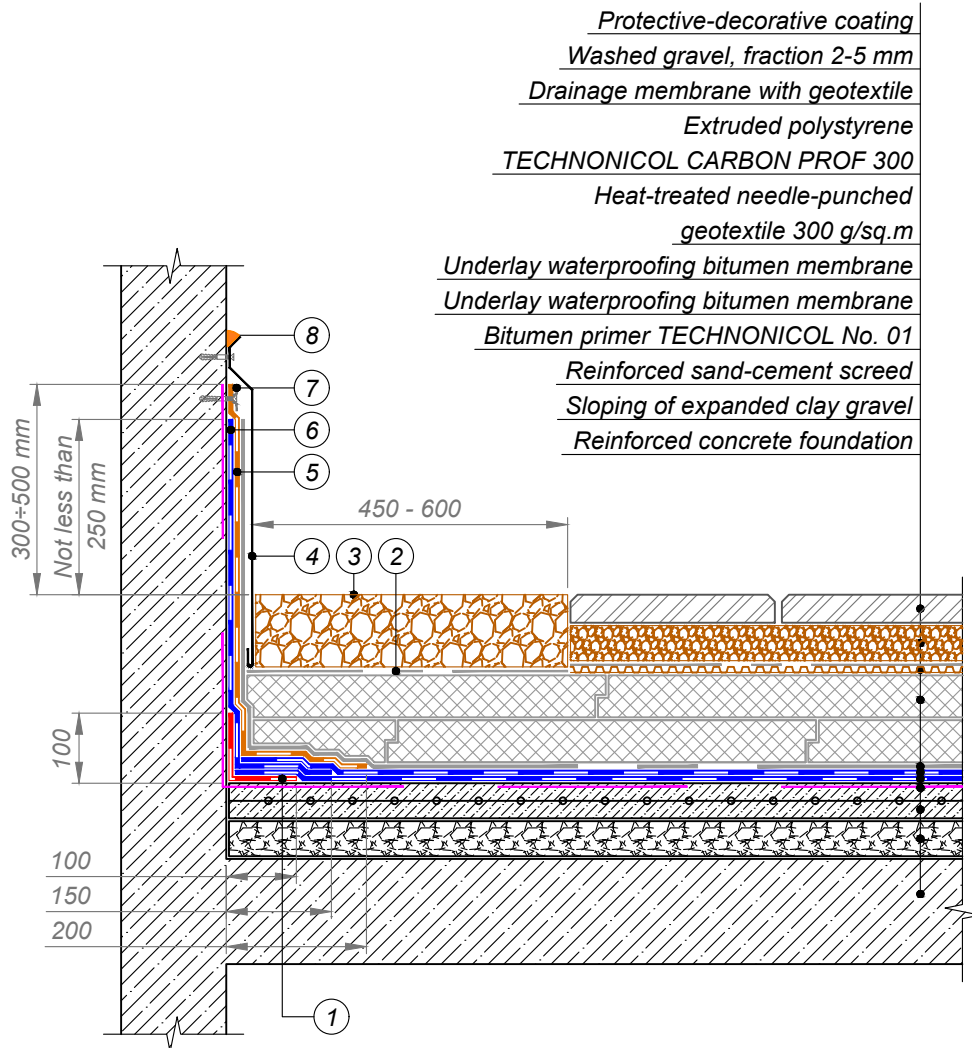


- | | |
|---|--|
| ① Additional layer of waterproofing system -
Underlay waterproofing bitumen membrane | ⑥ Funnel extension element |
| ② Sealing foam | ⑦ Water drain trap |
| ③ Drainage ring D1 | ⑧ Compression flange |
| ④ Rainwater funnel | ⑨ Heat-treated needle-punched
geotextile 150 g/sq.m |
| ⑤ Drainage ring D2 | ⑩ Washed gravel, fraction 10-15 mm |

NOTES

* To provide for increase in slope to the funnel up to 5% within radius of not less than 500 mm around it. It is recommended to provide for the funnel deepening by 20-30 mm relative to the roof level.

				TERRACE WITH DRAINAGE	DESIGN	APPROVED
				RAINWATER FUNNEL	SCALE	DATE
REV.	DATE	DESCRIPTION	CHECKED		DWG No.	REV.

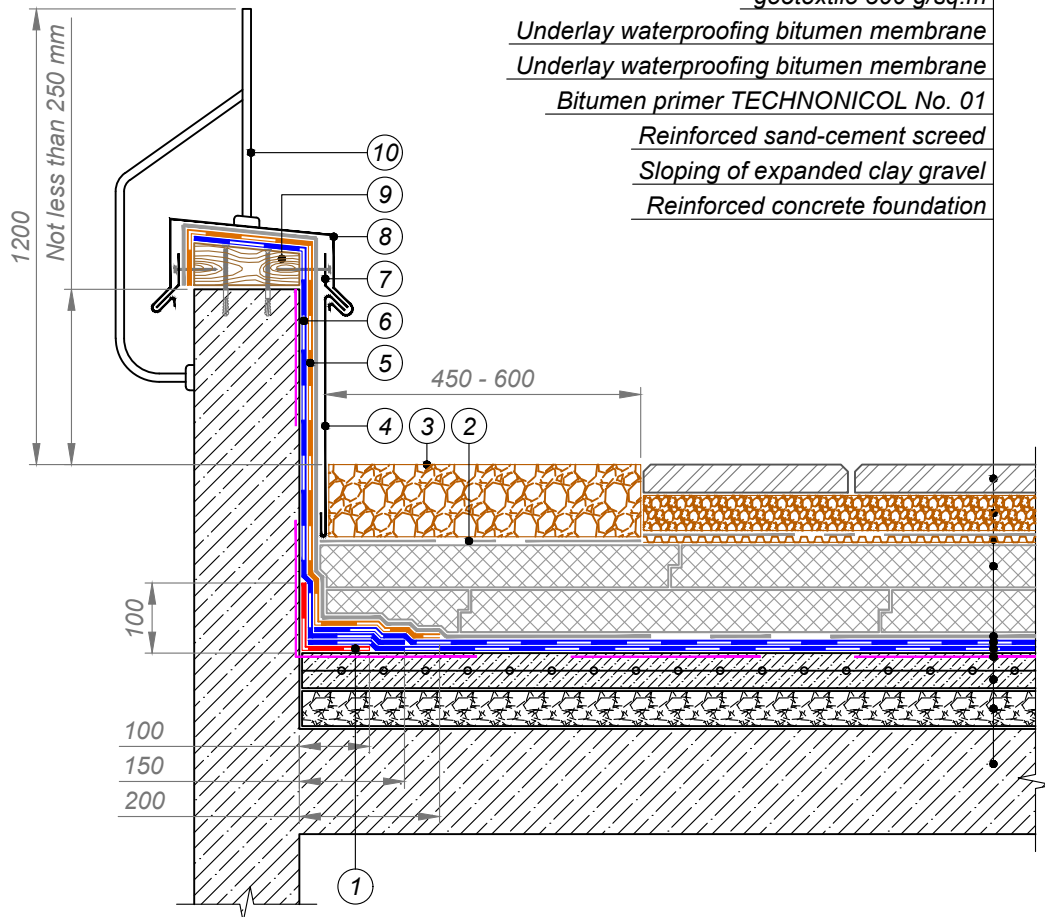


- | | |
|---|--|
| <p>① Strengthening layer - Underlay bitumen membrane</p> <p>② Heat-treated needle-punched geotextile 150 g/sq.m</p> <p>③ Washed gravel, fraction 10-15 mm</p> <p>④ Protective flashing of galvanized steel to be fastened by roofing self-tapping screws with rubber washer at intervals not more than 500 mm</p> | <p>⑤ Top layer of waterproofing system on vertical surface - Cap sheet bitumen membrane</p> <p>⑥ Bottom layer of waterproofing system on vertical surface - Underlay bitumen membrane</p> <p>⑦ Waterproofing membrane edge to be fastened by self-tapping screws with metal washer not less than 50 mm in diameter at intervals not less than 250 mm</p> <p>⑧ Sealing mastic</p> |
|---|--|

				TERRACE WITH DRAINAGE	DESIGN	APPROVED
				JUNCTION TO WALL	SCALE	DATE
REV.	DATE	DESCRIPTION	CHECKED		DWG No.	REV.

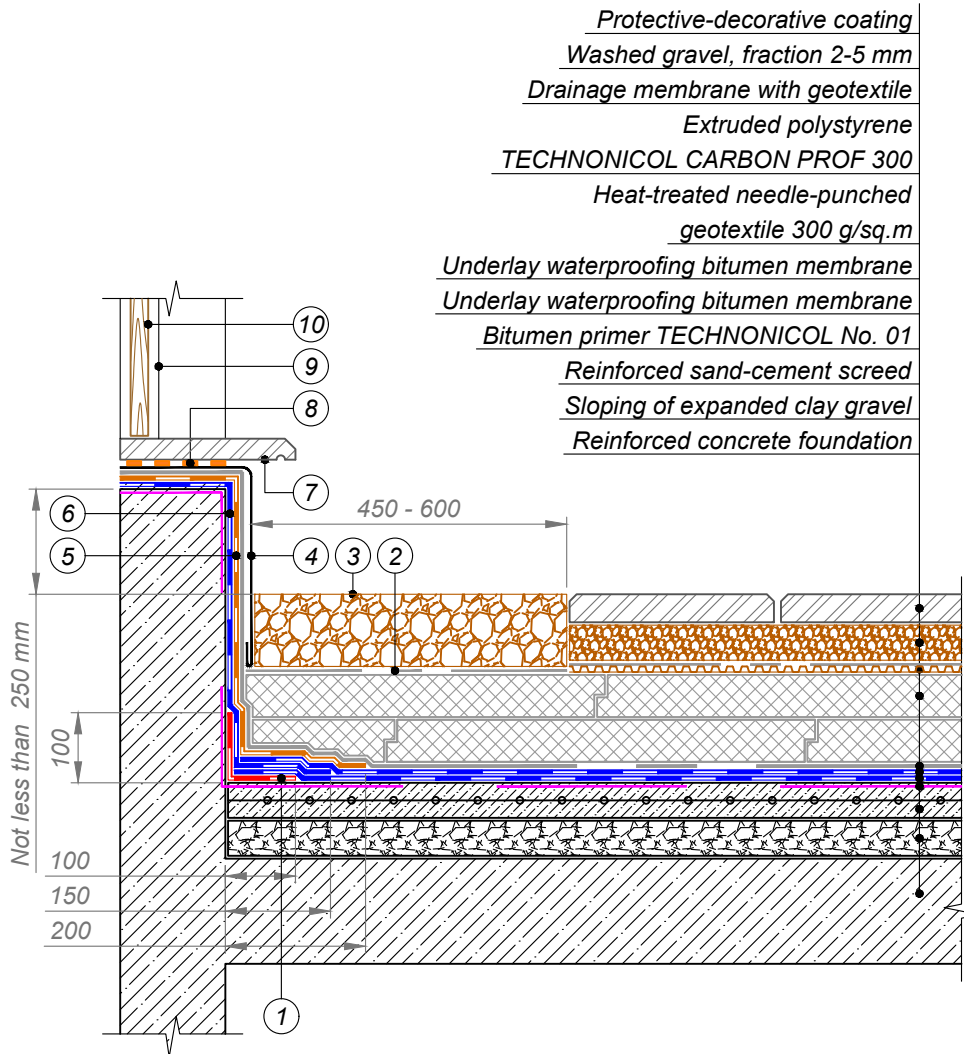


- Protective-decorative coating
- Washed gravel, fraction 2-5 mm
- Drainage membrane with geotextile
- Extruded polystyrene
- TECHNICOL CARBON PROF 300
- Heat-treated needle-punched geotextile 300 g/sq.m
- Underlay waterproofing bitumen membrane
- Underlay waterproofing bitumen membrane
- Bitumen primer TECHNICOL No. 01
- Reinforced sand-cement screed
- Sloping of expanded clay gravel
- Reinforced concrete foundation



- | | |
|--|--|
| ① Strengthening layer - Underlay bitumen membrane | ⑥ Bottom layer of waterproofing system on vertical surface - Underlay bitumen membrane |
| ② Heat-treated needle-punched geotextile 150 g/sq.m | ⑦ Fastening element |
| ③ Washed gravel | ⑧ Galvanized steel flashing |
| ④ Protective galvanized steel flashing | ⑨ Antiseptic treated timber |
| ⑤ Top layer of waterproofing system on vertical surface - Cap sheet bitumen membrane | ⑩ Roof edge railing |

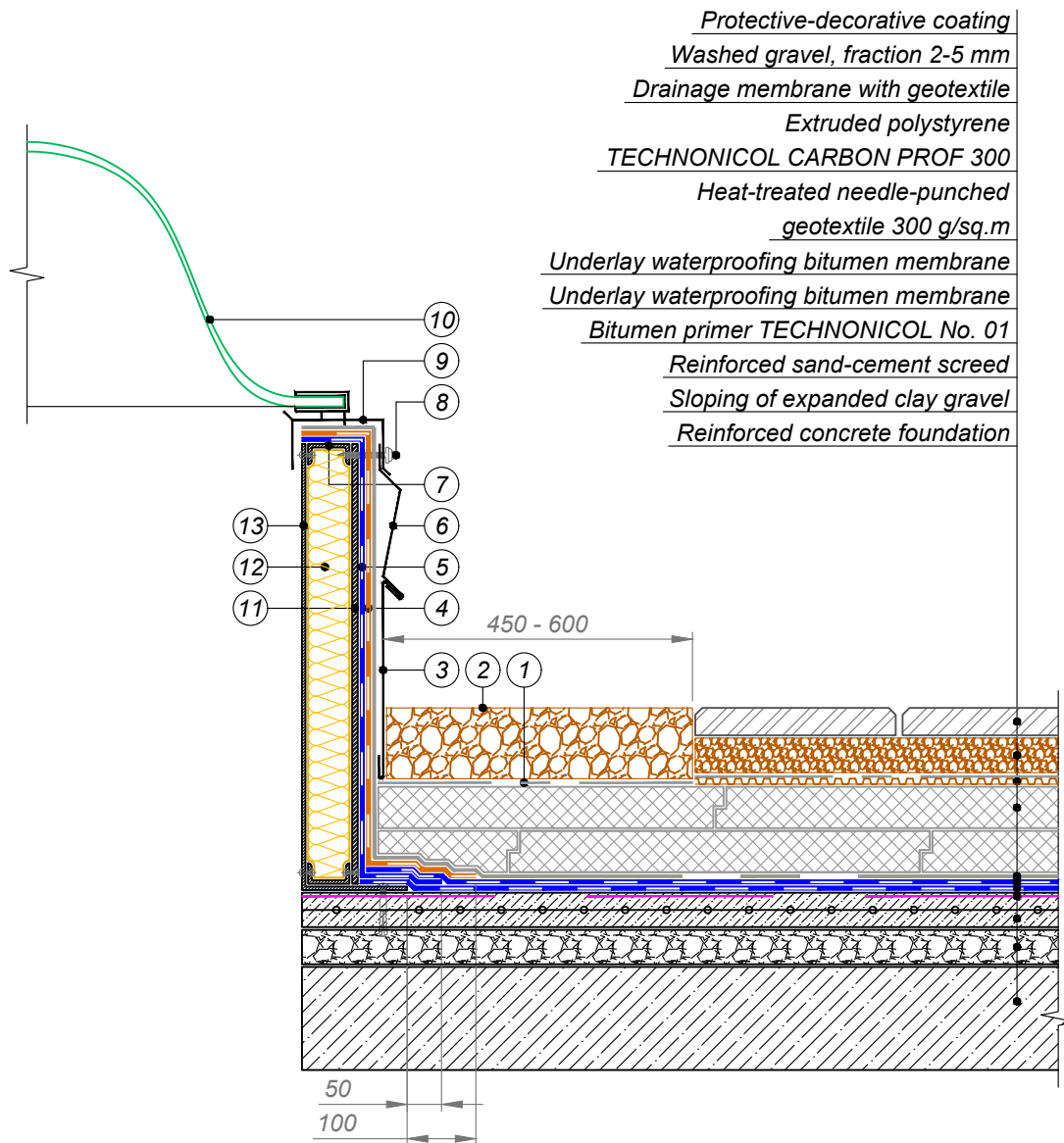
				TERRACE WITH DRAINAGE	DESIGN	APPROVED
				JUNCTION TO PARAPET	SCALE	DATE
REV.	DATE	DESCRIPTION	CHECKED		DWG No.	REV.



- Protective-decorative coating
- Washed gravel, fraction 2-5 mm
- Drainage membrane with geotextile
- Extruded polystyrene
- TECHNICOL CARBON PROF 300
- Heat-treated needle-punched geotextile 300 g/sq.m
- Underlay waterproofing bitumen membrane
- Underlay waterproofing bitumen membrane
- Bitumen primer TECHNICOL No. 01
- Reinforced sand-cement screed
- Sloping of expanded clay gravel
- Reinforced concrete foundation

- ① Strengthening layer - Underlay bitumen membrane
- ② Heat-treated needle-punched geotextile 150 g/sq.m
- ③ Washed gravel
- ④ Protective flashing of galvanized steel
- ⑤ Top layer of waterproofing system on vertical surface - Cap sheet bitumen membrane
- ⑥ Bottom layer of waterproofing system on vertical surface - Underlay bitumen membrane
- ⑦ Sill plate
- ⑧ Sealing mastic
- ⑨ Door frame
- ⑩ Door

				TERRACE WITH DRAINAGE	DESIGN	APPROVED
				JUNCTION TO EXIT ON THE ROOF	SCALE	DATE
REV.	DATE	DESCRIPTION	CHECKED		DWG No.	REV.



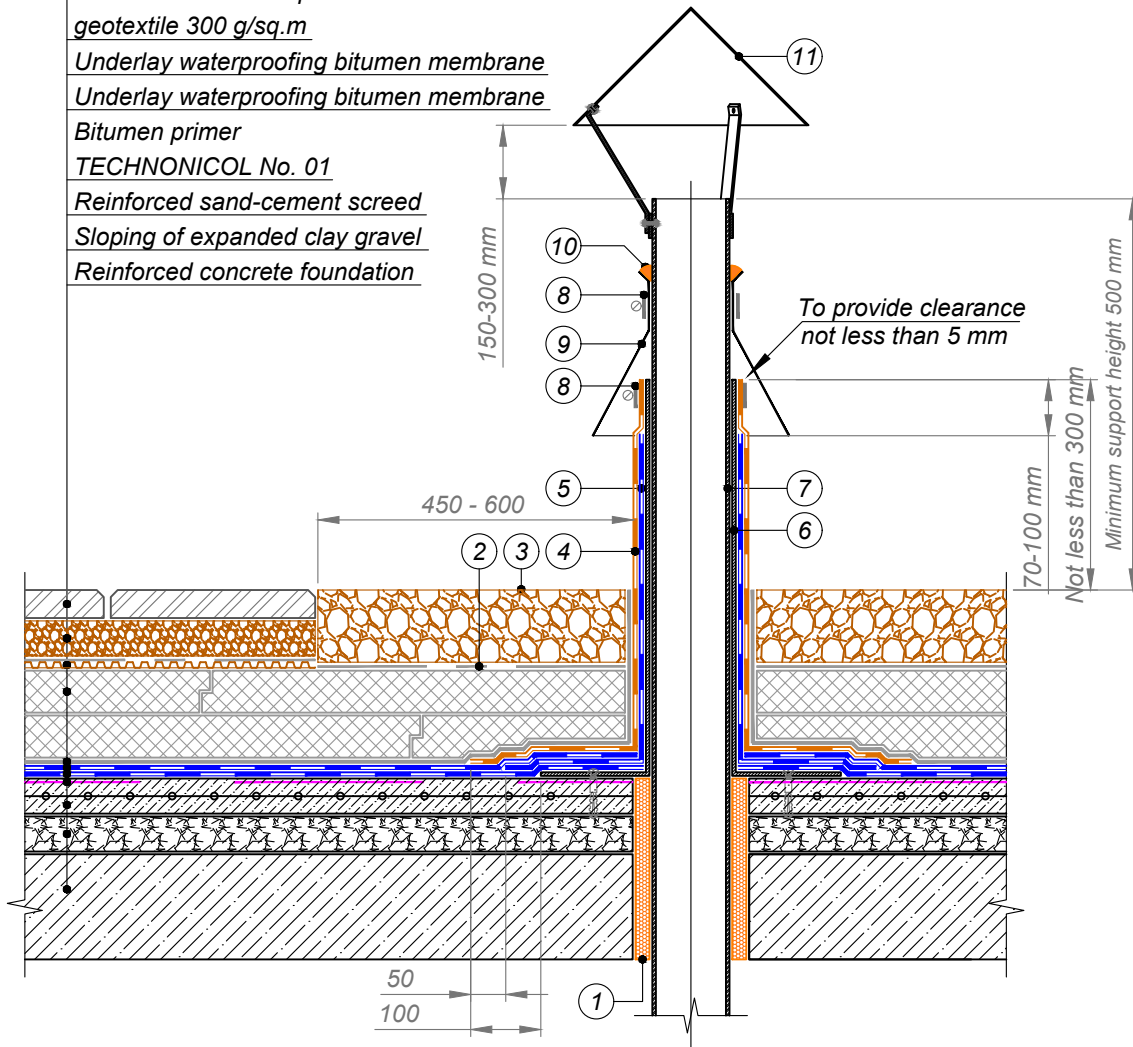
- Protective-decorative coating
- Washed gravel, fraction 2-5 mm
- Drainage membrane with geotextile
- Extruded polystyrene
- TECHNONICOL CARBON PROF 300
- Heat-treated needle-punched geotextile 300 g/sq.m
- Underlay waterproofing bitumen membrane
- Underlay waterproofing bitumen membrane
- Bitumen primer TECHNOMICOL No. 01
- Reinforced sand-cement screed
- Sloping of expanded clay gravel
- Reinforced concrete foundation

- | | |
|--|---|
| <ul style="list-style-type: none"> ① Heat-treated needle-punched geotextile 150 g/sq.m ② Washed gravel ③ Removable metal flashing ④ Top layer of waterproofing system on vertical surface - Cap sheet bitumen membrane ⑤ Bottom layer of waterproofing system on vertical surface - Underlay bitumen membrane ⑥ Protective flashing of galvanized steel to be fastened by roofing self-tapping screws with rubber washer at intervals not more than 500 mm | <ul style="list-style-type: none"> ⑦ Galvanized steel profile to be fastened by rivets ⑧ Fasten the roof cowl base with intervals not more than 500 mm, depending on wind load, but not less than 2 fastening elements per one side ⑨ Metal cap ⑩ Skylight translucent doom ⑪ CBPB or ACB ⑫ Stone wool thermal insulation ⑬ Galvanized steel sheet not less than 3 mm in thickness |
|--|---|

				TERRACE WITH DRAINAGE	DESIGN	APPROVED
				JUNCTION TO SKYLIGHT	SCALE	DATE
REV.	DATE	DESCRIPTION	CHECKED		DWG No.	REV.



- Protective-decorative coating
- Washed gravel, fraction 2-5 mm
- Drainage membrane with geotextile
- Extruded polystyrene foam
- TECHNICOL CARBON PROF 300
- Heat-treated needle-punched geotextile 300 g/sq.m
- Underlay waterproofing bitumen membrane
- Underlay waterproofing bitumen membrane
- Bitumen primer
- TECHNICOL No. 01
- Reinforced sand-cement screed
- Sloping of expanded clay gravel
- Reinforced concrete foundation



- | | |
|---|--|
| <ul style="list-style-type: none"> ① Sealing foam ② Heat-treated needle-punched geotextile 150 g/sq.m ③ Washed gravel ④ Cap sheet bitumen membrane ⑤ Underlay bitumen membrane | <ul style="list-style-type: none"> ⑥ Galvanized steel sleeve not less than 1 mm in thickness ⑦ Pipe ⑧ Compression metal clamp ⑨ Metal rain collar ⑩ Sealing mastic ⑪ Roof cowl |
|---|--|

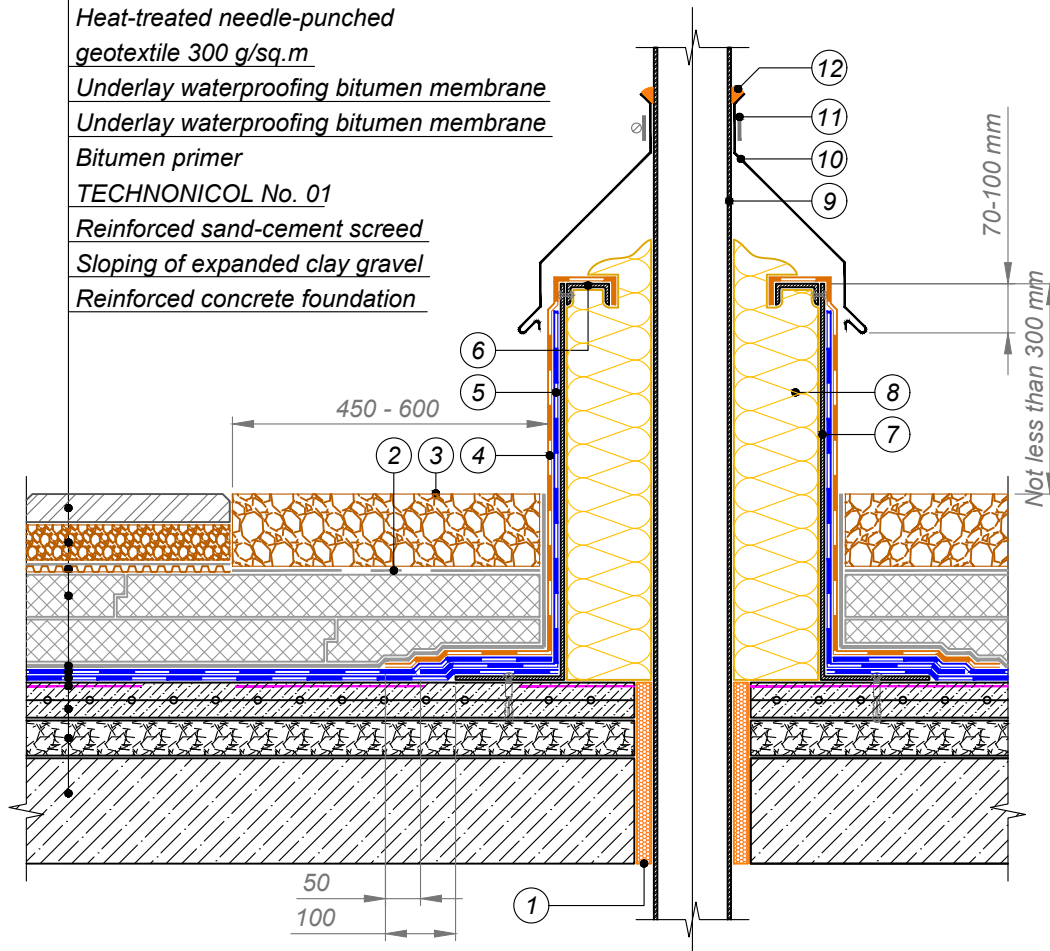
NOTES

The solution is used for single cold pipes up to 250 mm in diameter, anchors, antenna bracings

				TERRACE WITH DRAINAGE	DESIGN	APPROVED
				JUNCTION TO COLD PIPE	SCALE	DATE
REV.	DATE	DESCRIPTION	CHECKED		DWG No.	REV.



Protective-decorative coating
Washed gravel, fraction 2-5 mm
Drainage membrane with geotextile
Extruded polystyrene
TECHNONICOL CARBON PROF 300
Heat-treated needle-punched geotextile 300 g/sq.m
Underlay waterproofing bitumen membrane
Underlay waterproofing bitumen membrane
Bitumen primer
TECHNONICOL No. 01
Reinforced sand-cement screed
Sloping of expanded clay gravel
Reinforced concrete foundation

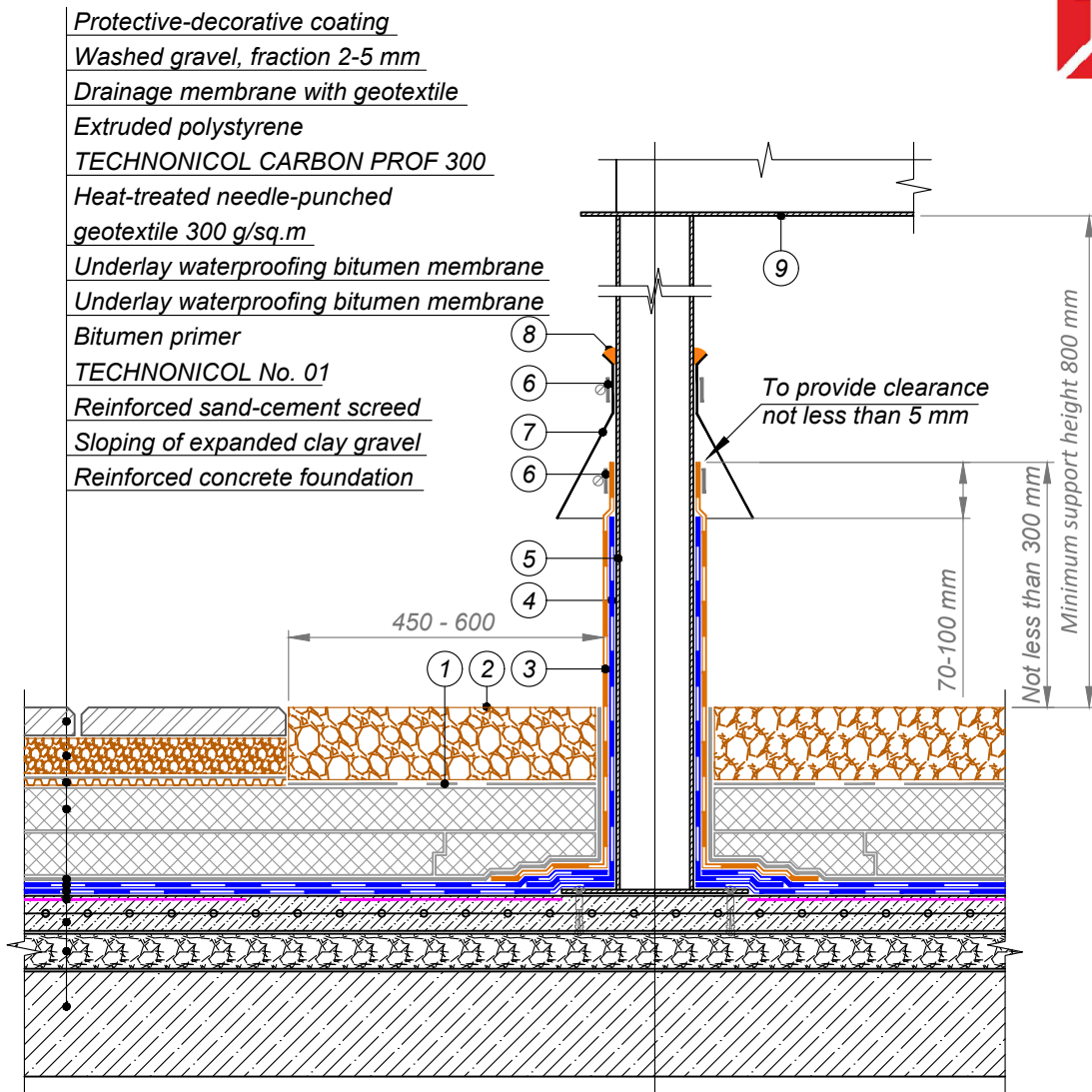


- | | |
|--|--|
| ① Sealing foam | ⑦ Galvanized steel duct
not less than 3 mm in thickness |
| ② Heat-treated needle-punched
geotextile 150 g/sq.m | ⑧ Stone wool thermal insulation
not less than 120 mm in thickness |
| ③ Washed gravel | ⑨ Pipe |
| ④ Cap sheet bitumen membrane | ⑩ Galvanized steel flashing |
| ⑤ Underlay bitumen membrane | ⑪ Compression metal clamp |
| ⑥ Galvanized steel profile
to be fastened by rivets | ⑫ Sealant * |

NOTES

* Polyurethane sealant to be applied at temperatures up to 80°C.
 At high temperatures use specialized high-temperature sealants.

				TERRACE WITH DRAINAGE	DESIGN	APPROVED
				JUNCTION TO HOT PIPE	SCALE	DATE
REV.	DATE	DESCRIPTION	CHECKED		DWG No.	REV.



- | | |
|--|---------------------------|
| ① Heat-treated needle-punched geotextile 150 g/sq.m | ⑤ Support |
| ② Washed gravel | ⑥ Compression metal clamp |
| ③ Top layer of waterproofing system at junction - Cap sheet bitumen membrane | ⑦ Metal rain collar |
| ④ Bottom layer of waterproofing system at junction - Underlay bitumen membrane | ⑧ Sealing mastic |
| | ⑨ Equipment support |

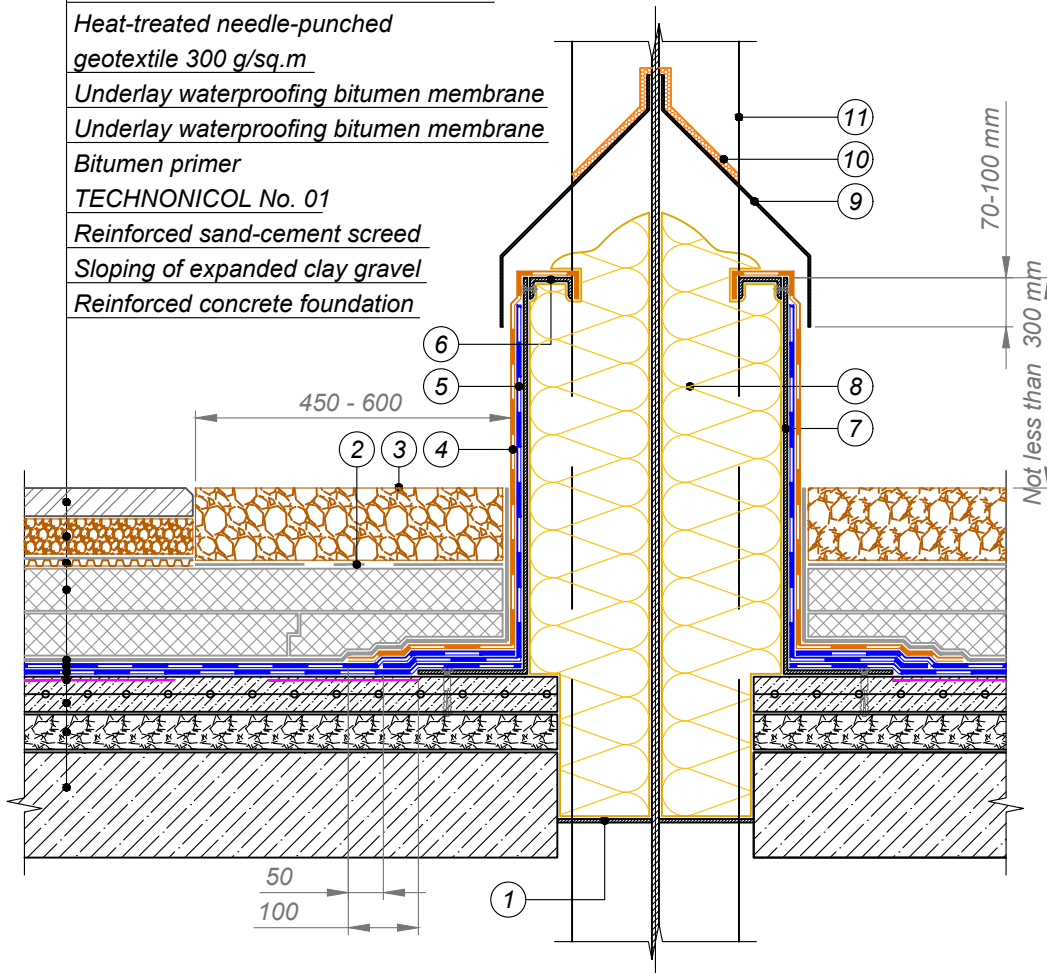
NOTES

Height of support above the roof surface should be not less than 800 mm to allow for possibility of roofing works and repairs.

				TERRACE WITH DRAINAGE	DESIGN	APPROVED
				SUPPORT FOR EQUIPMENT	SCALE	DATE
REV.	DATE	DESCRIPTION	CHECKED		DWG No.	REV.



Protective-decorative coating
Washed gravel, fraction 2-5 mm
Drainage membrane with geotextile
Extruded polystyrene
TECHNONICOL CARBON PROF 300
Heat-treated needle-punched geotextile 300 g/sq.m
Underlay waterproofing bitumen membrane
Underlay waterproofing bitumen membrane
Bitumen primer
TECHNONICOL No. 01
Reinforced sand-cement screed
Sloping of expanded clay gravel
Reinforced concrete foundation

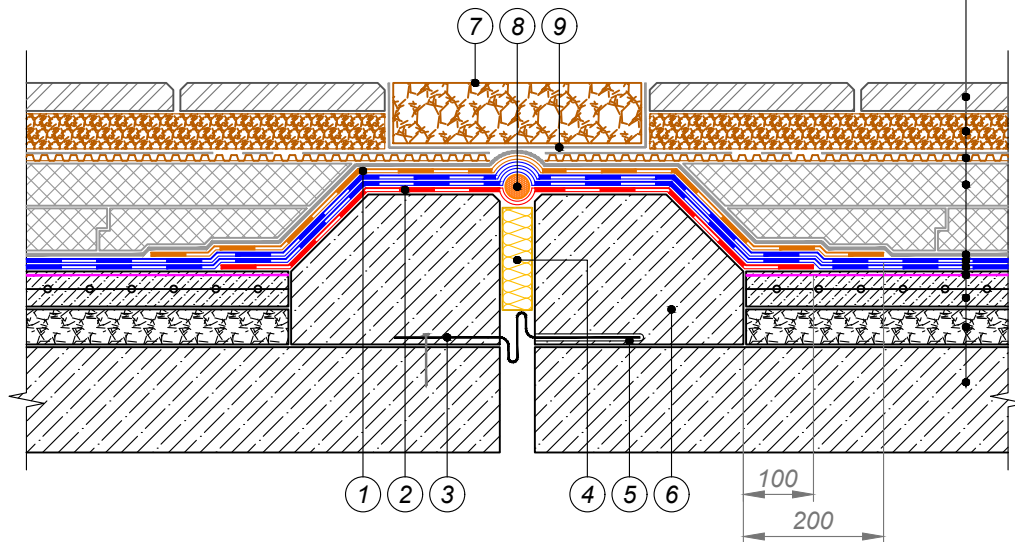


- | | |
|--|--|
| <ul style="list-style-type: none"> ① Weld the metal plate and apply sealant around the perimeter ② Heat-treated needle-punched geotextile 150 g/sq.m ③ Washed gravel ④ Top layer of waterproofing system at junction - Cap sheet bitumen membrane ⑤ Bottom layer of waterproofing system at junction - Underlay bitumen membrane ⑥ Galvanized steel profile to be fastened by rivets | <ul style="list-style-type: none"> ⑦ Galvanized steel duct not less than 3 mm in thickness ⑧ Non-combustible thermal insulation ⑨ Metal flashing not less than 3 mm in thickness should overlap the duct by 70-100 mm ⑩ Weld flashing to the column and treat the joint with sealing mastic ⑪ Rolled metal column |
|--|--|

				TERRACE WITH DRAINAGE	DESIGN	APPROVED
				ROLLED METAL COLUMN PASSING THROUGH THE ROOF	SCALE	DATE
REV.	DATE	DESCRIPTION	CHECKED		DWG No.	REV.

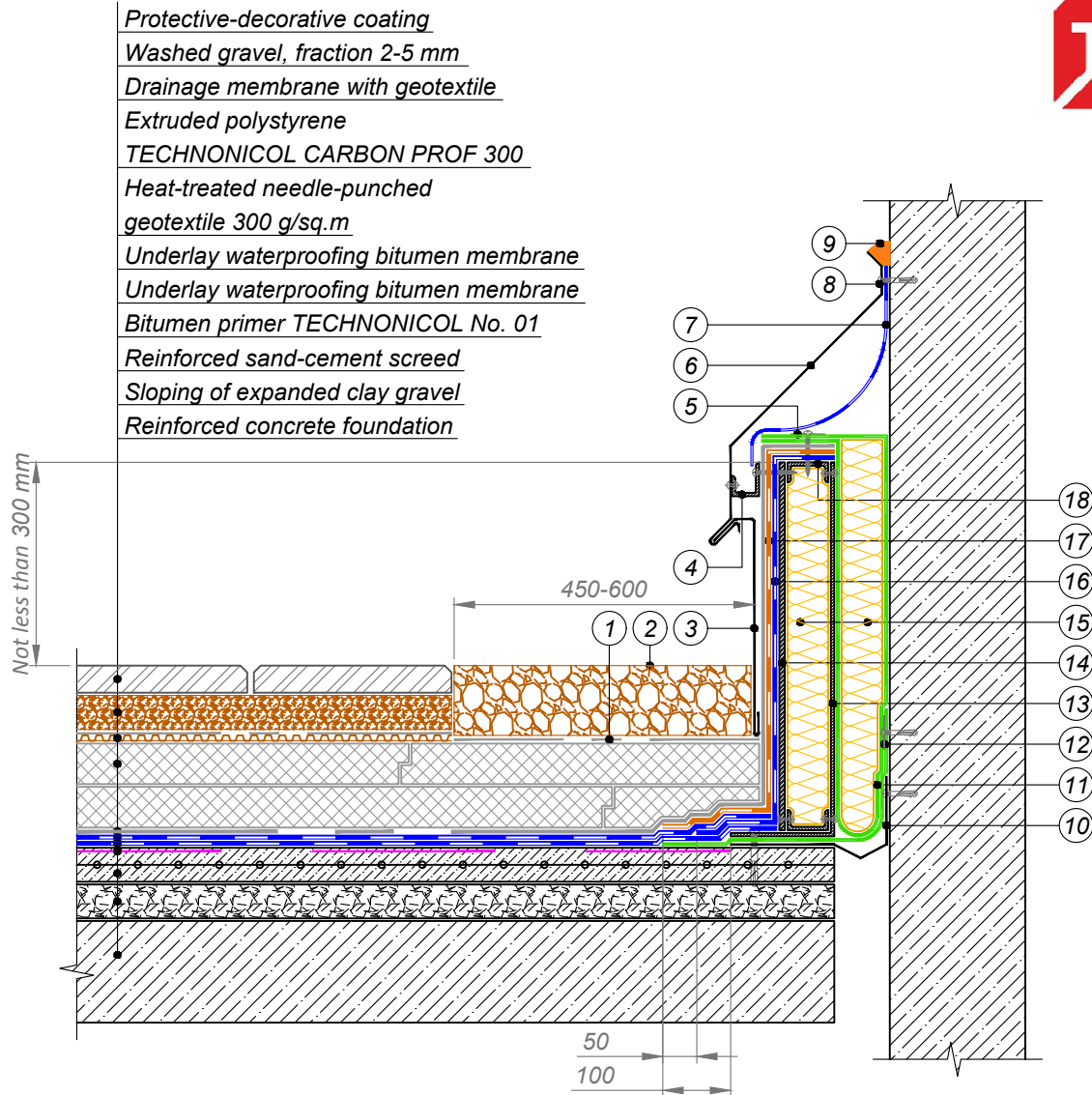


Protective-decorative coating
Washed gravel, fraction 2-5 mm
Drainage membrane with geotextile
Extruded polystyrene
TECHNICOL CARBON PROF 300
Heat-treated needle-punched
geotextile 300 g/sq.m
Underlay waterproofing bitumen membrane
Underlay waterproofing bitumen membrane
Bitumen primer TECHNICOL No. 01
Reinforced sand-cement screed
Sloping of expanded clay gravel
Reinforced concrete foundation



- | | |
|--|--|
| ① Additional layer of waterproofing system -
Cap sheet bitumen membrane | ⑥ Lightweight concrete |
| ② Strengthening layer - Underlay bitumen membrane | ⑦ Washed gravel |
| ③ Steel compensator | ⑧ Elastic bundle $\varnothing > 30$ mm |
| ④ Stone wool thermal insulation | ⑨ Heat-treated needle-punched
geotextile 150 g/sq.m |
| ⑤ Polyethylene film | |

				TERRACE WITH DRAINAGE	DESIGN	APPROVED
				EXPANSION JOINT	SCALE	DATE
REV.	DATE	DESCRIPTION	CHECKED		DWG No.	REV.



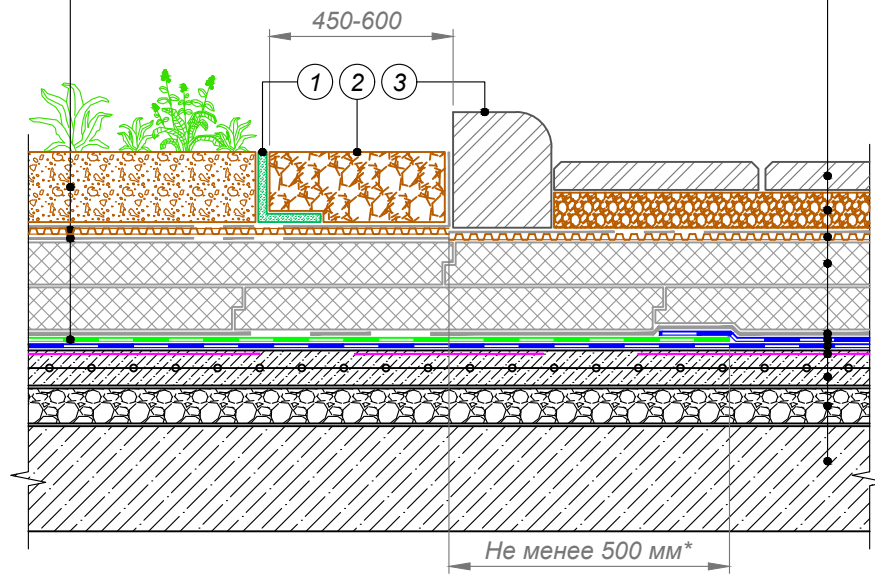
- | | |
|--|--|
| ① Heat-treated needle-punched geotextile 150 g/sq.m | ⑪ Vapour barrier material for fixation of insulation |
| ② Washed gravel | ⑫ Vapour barrier material to be built-up on vertical surface and fastened by self-tapping screws with washer \varnothing 50 mm |
| ③ Removable metal flashing | ⑬ Galvanized steel profile not less than 3 mm in thickness |
| ④ Galvanized steel compensator to be mechanically fastened with flashing | ⑭ CBPB or ACB |
| ⑤ Vapour barrier to be fastened by self-tapping screws with washer \varnothing 50 mm at 500 mm intervals | ⑮ Stone wool thermal insulation |
| ⑥ Galvanized steel flashing | ⑯ Underlay bitumen membrane |
| ⑦ Roofing material flashing | ⑰ Cap sheet bitumen membrane |
| ⑧ Fasten by self-tapping screws at 200 mm intervals | ⑱ Galvanized steel profile |
| ⑨ Sealing mastic | |
| ⑩ Galvanized steel compensator to be fastened on wall by self-tapping screws | |

				TERRACE WITH DRAINAGE	DESIGN	APPROVED
				EXPANSION JOINT AT JUNCTION TO WALL	SCALE	DATE
REV.	DATE	DESCRIPTION	CHECKED		DWG No.	REV.



Protective-decorative coating
Washed gravel, fraction 2-5 mm
Drainage membrane with geotextile
Extruded polystyrene
TECHNICOL CARBON PROF 300
Heat-treated needle-punched
geotextile 300 g/sq.m
Underlay waterproofing bitumen membrane
Underlay waterproofing bitumen membrane
Bitumen primer TECHNICOL No. 01
Reinforced sand-cement screed
Sloping of expanded clay gravel
Reinforced concrete foundation

Plant substrate with green planting
Drainage membrane with geotextile
Heat-treated needle-punched
geotextile 150 g/sq.m
Anti-root waterproofing bitumen membrane



- ① L-shaped plastic element
- ② Washed gravel
- ③ Kerb stone

NOTES

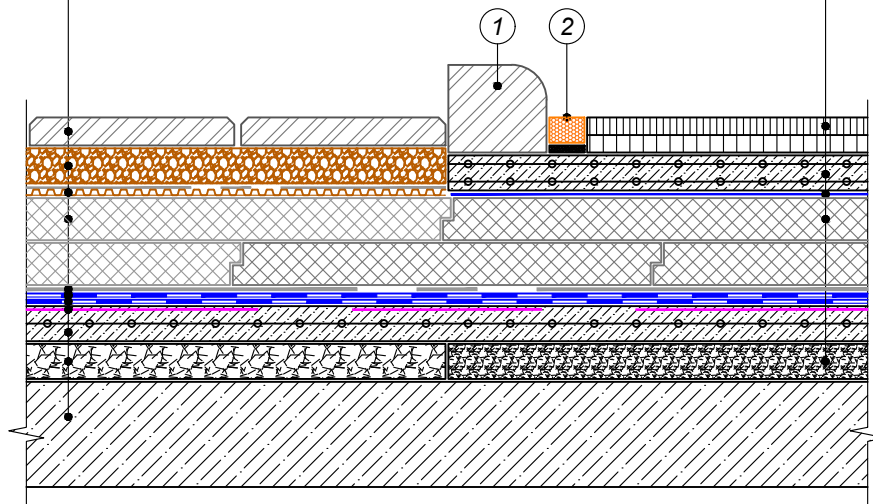
* Anti-root waterproofing bitumen membrane to be taken up on the roof section using another roofing system by the amount of not less than 500 mm

				TERRACE WITH DRAINAGE	DESIGN	APPROVED
				CONJUGATION WITH PEDESTRIAN AREA	SCALE	DATE
REV.	DATE	DESCRIPTION	CHECKED		DWG No.	REV.



Protective-decorative coating
Washed gravel, fraction 2-5 mm
Drainage membrane with geotextile
Extruded polystyrene
TECHNONICOL CARBON PROF 300
Heat-treated needle-punched
geotextile 300 g/sq.m
Underlay waterproofing bitumen membrane
Underlay waterproofing bitumen membrane
Bitumen primer TECHNOCOL No. 01
Reinforced sand-cement screed
Sloping of expanded clay gravel
Reinforced concrete foundation

Two layers of asphaltic concrete
Reinforced concrete slab
Polyethylene film
Extruded polystyrene
TECHNONICOL CARBON
Sloping of claydite concrete



- ① Kerb stone
- ② Polymer-bitumen sealant on layer of sand

				TERRACE WITH DRAINAGE	DESIGN	APPROVED
				CONJUGATION WITH TRAFFIC AREA	SCALE	DATE
REV.	DATE	DESCRIPTION	CHECKED		DWG No.	REV.